

Setouchi Triennale 2025

Ryobi フレンズパック



# Uno Port Area Triennale Shuttle Bus

**Free bus, no reservations required**

Setouchi Triennale 2025 Summer and Fall Sessions : **Runs daily!**

T i m e t a b l e	Services	JR Uno Station Platform 2	In front of Power Base	Miyama Park Entrance	In front of Power Base	Hinode Park	JR Uno Station Platform 2
	Service 1	9 : 30	9 : 40	9 : 50	10 : 05	ARR 10 : 10 / DEP 10 : 25	10 : 30
	Service 2	10 : 30	10 : 40	10 : 50	11 : 05	ARR 11 : 10 / DEP 11 : 25	11 : 30
	Service 3	11 : 30	11 : 40	11 : 50	12 : 05	ARR 12 : 10 / DEP 12 : 25	12 : 30
	Service 4	13 : 30	13 : 40	13 : 50	14 : 05	ARR 14 : 10 / DEP 14 : 25	14 : 30
	Service 5	14 : 30	14 : 40	14 : 50	15 : 05	ARR 15 : 10 / DEP 15 : 25	15 : 30
	Service 6	15 : 30	15 : 40	15 : 50	16 : 05	ARR 16 : 10 / DEP 16 : 25	16 : 30
	Service 7	16 : 30	16 : 40	16 : 50	17 : 05	ARR 17 : 10 / DEP 17 : 25	17 : 30

\*Please board the Art Festival Shuttle Bus from the rear of the vehicle and exit from the front door. The bus will have a "Art Festival Shuttle Bus" sign on it.

## Operation Calendar

### Summer Session

August 1 (Fri) - 31 (Sun) Operating days are indicated

### Autumn Session

October 3 (Fri) - November 9 (Sun) Operating days are indicated

8

August 2025

Sun	Mon	Tue	Wed	Thu	Fri	Sat
					1	2
3	4	5	6	7	8	9
10	11	12	13	14	15	16
17	18	19	20	21	22	23
24/31	25	26	27	28	29	30

10

October 2025

Sun	Mon	Tue	Wed	Thu	Fri	Sat
			1	2	3	4
5	6	7	8	9	10	11
12	13	14	15	16	17	18
19	20	21	22	23	24	25
26	27	28	29	30	31	

11

November 2025

Sun	Mon	Tue	Wed	Thu	Fri	Sat
						1
2	3	4	5	6	7	8
9	10	11	12	13	14	15
16	17	18	19	20	21	22
23/30	24	25	26	27	28	29

## Please take our survey!

What did you think of the Uno Port Area Art Festival Shuttle Bus?  
Please share your valuable feedback!



Access  
the  
QR code



Complete the survey and receive  
a small gift. **The first 350 people**  
will receive one.

Please present your completed survey below.  
Location: Uno Port Information Center, JR Uno Station  
Times: 8:00 AM - 7:00 PM (during the festival only)

## Related Websites and Social Media Introductions



Setouchi Triennale  
2025



Tamano Tourism  
Association Website



Tamano Tourism  
Association Social Media  
(Instagram)

Bus service and events may be canceled in the event of a disaster or a heatstroke alert.

[Organizer] Setouchi Triennale Tama no Omotenashi Promotion Committee

[Inquiries] Ryobi Tours Co., Ltd., Friends Pack Center

Photo courtesy of Setouchi Triennale Executive Committee

**Tel: 086-226-1515**

Emergency Contact Number: 080-1904-9238

Telephone Reception Hours:

**Monday-Friday**

(excluding Saturdays, Sundays, holidays, and substitute holidays)

**10:00 AM - 1:00 PM**

## Bus Map & Art Information

### Miyama Park Entrance



un05 Photo by Yasushi Ichikawa

**Estelle Stocker** ※JR Uno Station  
「JR Uno Minato Line Art Project」



**SHIMA** Photo by Kazuyo Sejima & Associates  
Office of Ryue Nishizawa

Kazuyo Sejima & Associates, Architects / Ryue Nishizawa & Associates  
Location: Uno Port (near the ferry terminal to Naoshima)



un14-1 Photo by Keizo Kioku

**Teppei Kaneuji "S.F. (Seaside Friction)"**  
Passport required. No individual admission fee.



un14-2 NEW Photo by Shintaro Miyawaki

**Teppei Kaneuji "Model of Something"**  
Passport required. No individual admission fee.



un14-3 NEW

**Teppei Kaneuji "Hard Boiled Daydream (Miyama Park)"**  
Passport required. No individual admission fee.



un14-4 NEW

**Teppei Kaneuji "Tower (UNO)"**  
Passport required. No individual admission fee.

\*In the Uno Port area, in addition to the works mentioned above, you can also view works such as un02 Ozawa Atsushi "Memories of the Boat's Bottom," un03 Ozawa Atsushi "Beyond the Terminal," un08 Uchida Haruyuki "Memories of the Sea," un17 Mahmadmakh "Return of the Tide," un15 Boo Ji-hyun "The Home," and un16 SILT "Salt of Life."

## Uno Port Area

### Information

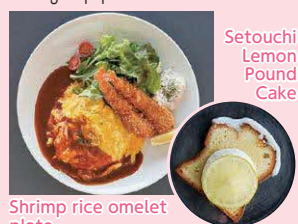


#### Uno Port and Chikko Shopping Street

Opened in 1910, the Utaka Sea Route (a sea route between Uno Port and Takamatsu Port) transported many people and goods via the Utaka Ferry, which connected Honshu and Shikoku. This rail ferry continued to carry trains until the opening of the Seto Ohashi Bridge in 1988. Even now that the Utaka Sea Route is no longer in operation, the port serves as a gateway to the islands, attracting tourists from all over the world. The Chikko Shopping Street near the port retains its former charm, with both new and old stores lining the street.

#### Hinode Park and Surrounding Area

A 20-minute walk from Uno Port, Hinode Park faces the ocean and offers panoramic views of the Naoshima Islands, including Naoshima and Mukoujima. Additionally, climbing Mount Takabe, 60 meters above sea level on the west side of the park, offers panoramic views of Teshima and Shodoshima. The adjacent Tamano Keirin Track (Chariroto Punk Tamano) opened in 1950 as part of postwar reconstruction efforts. The hotel, built around the track's bank, offers views of the Seto Inland Sea, making it a popular new tourist destination.



Shrimp rice omelet plate  
Cafe Restaurant FORQ (KEIRIN HOTEL by 温故知新)



#### Headquarters/Battery Assembly Plant "Power Base"

This headquarters/battery assembly plant was designed by Kazuyo Sejima. This headquarters/battery assembly plant was created with the aim of openly showcasing the battery manufacturing process to people around the world and spreading next-generation energy technology. Teppei Kaneuji's work "Model of Something" will be on display on the premises during the event. There will also be tours of the factory, a pop-up cafe featuring BOLLARD COFFEE, a coffee stand in Uno Port, and light meals in collaboration with Aoyagi, a renowned Japanese restaurant in Azabudai, Tokyo.

\*Please be sure to check the PowerX official website or app for information on when the artworks can be viewed, factory tours (fees apply), and cafe availability.



Admission Ticket (Tour and Cafe Use)

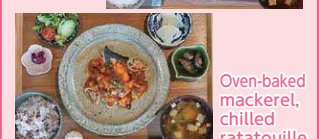


Power X Official Website

#### Miyama Park

A 15-minute bus ride from Uno Station, this park is rich in nature. Enjoy 7,000 cherry blossoms in the spring and autumn foliage in the fall. The Miyama English Garden, created by a landscape gardener invited from England to commemorate the city's 60th anniversary, is also a must-see. The adjacent roadside station sells agricultural products, fresh fish, bread, and more.

\*Please note that business hours and holidays vary by facility, so please inquire. Phone: 0863-21-2860 (Tamano City Park and Greenery Association)



Miyama Cafe PUUT  
Miyama Park Roadside Station

## Recommended Itinerary

Depart JR Uno Station at 9:30 AM → Arrive at Power Base at 9:40 AM / Depart 10:40 AM → Arrive at Miyama Park (viewing and lunch) at 11:50 AM / Depart 1:50 PM → Arrive at Hinode Park at 2:10 PM / Depart 2:25 PM → Arrive at JR Uno Station at 2:30 PM

Other "Recommended Itineraries in the Naoshima & Uno Port Area" ▶



## Tamano City Loop Bus "Sea Bus"

Combine your trip with the Uno Port Area Shuttle Bus and ride the "Sea Bus" around Tamano City to enjoy sightseeing in Tamano City while also enjoying the art festival!

